

# 21/02957/COND17

## Joint Development Control Committee – 16 August 2023

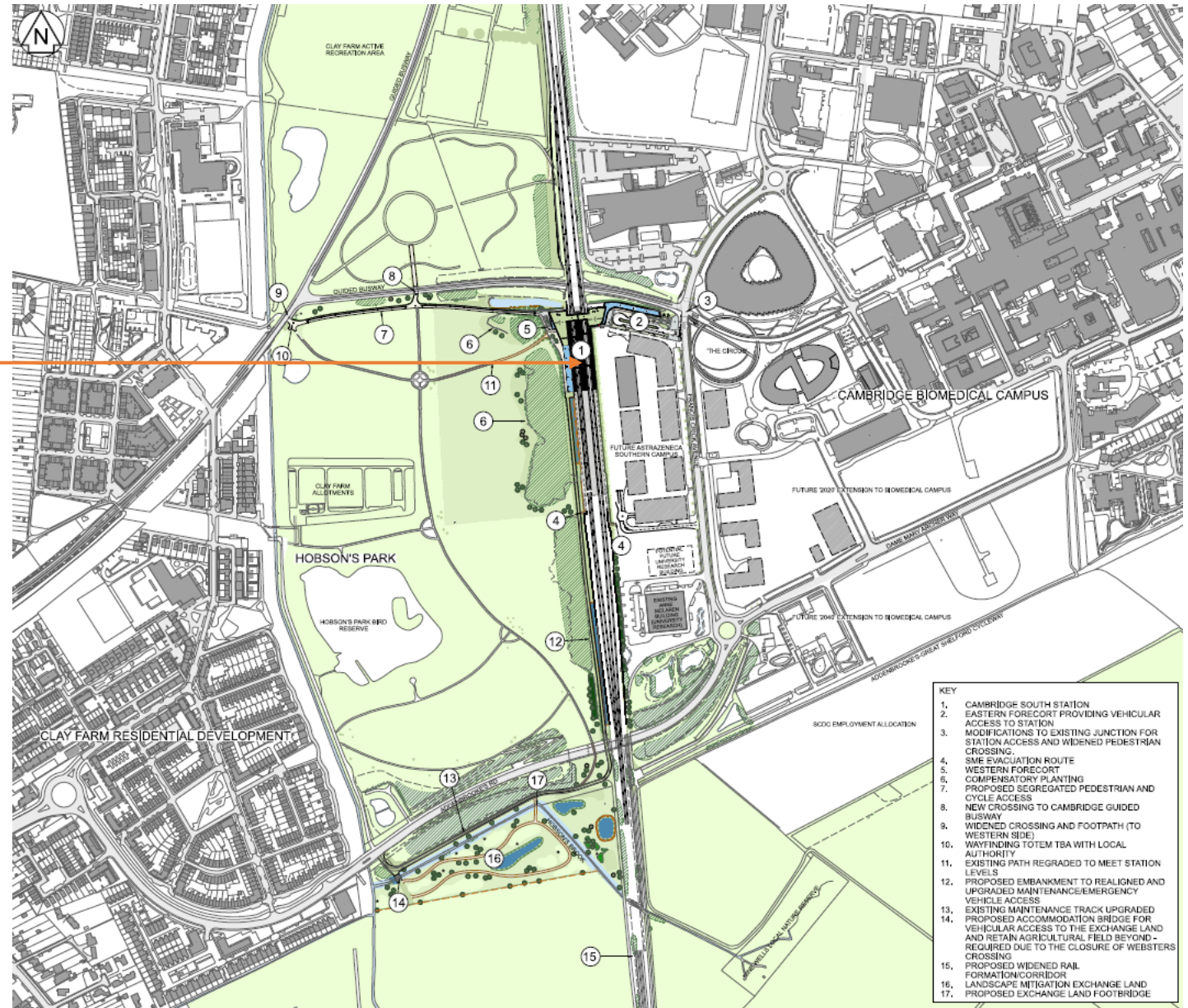
Mairead O’Sullivan, Principal Planner

Proposal: Submission of details required by condition 17 (Detailed design approval: Cambridge South Station) for phase 4 of the development of the deemed planning consent associated with the Network Rail (Cambridge South Infrastructure Enhancements) Order 2022 (Local Planning Authority Reference 21/02957/TWA)

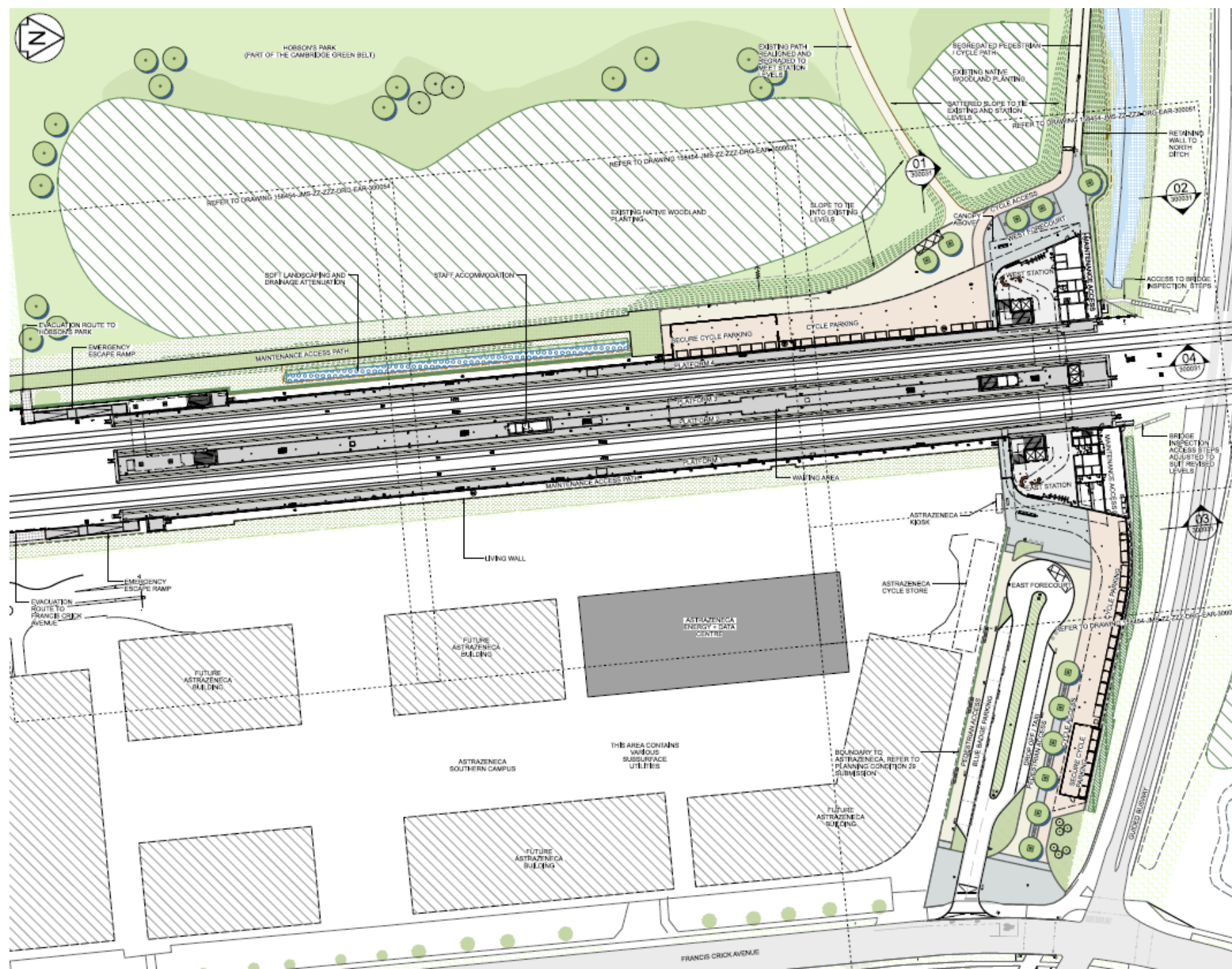
# Location Plan

Station location

Page 2

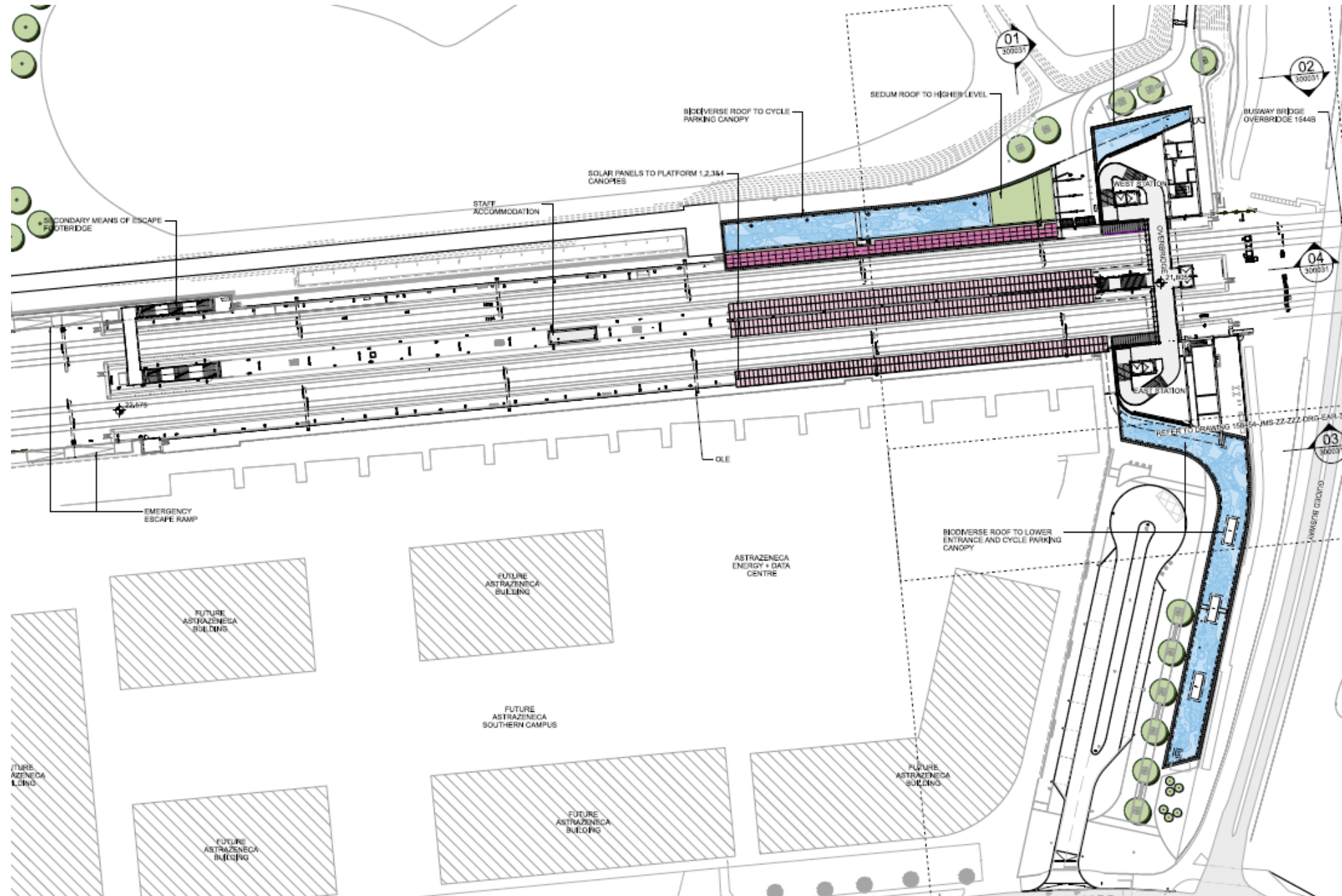


# Site plan - Platform level



# Site plan - Bridge level

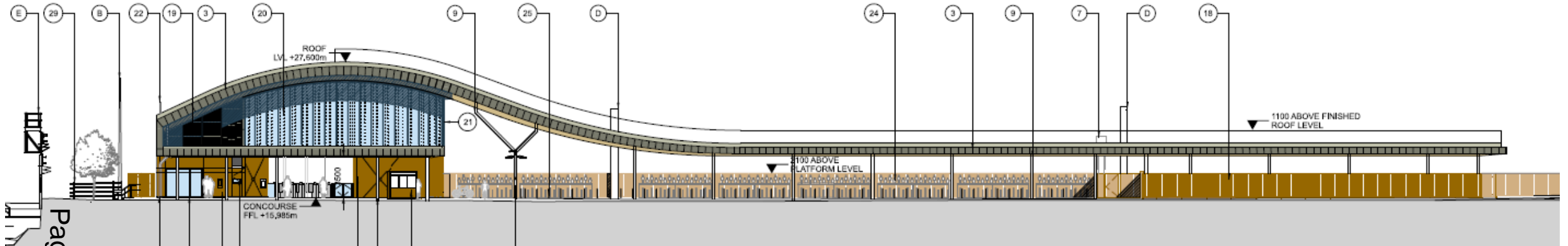
Page 4





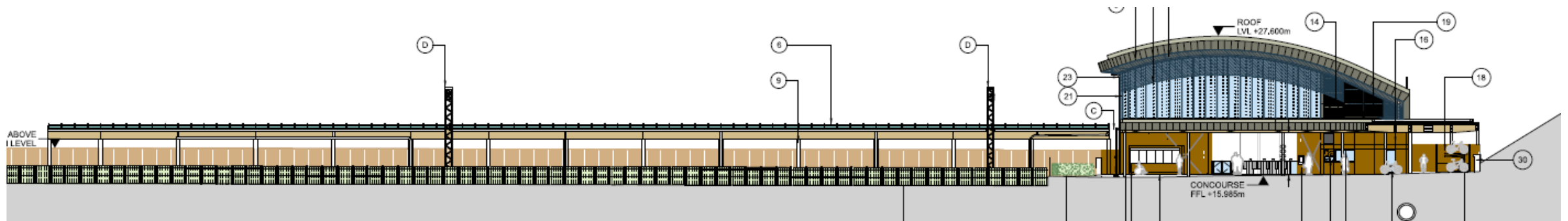
# Elevations

## West elevation



Page 6

## East elevation



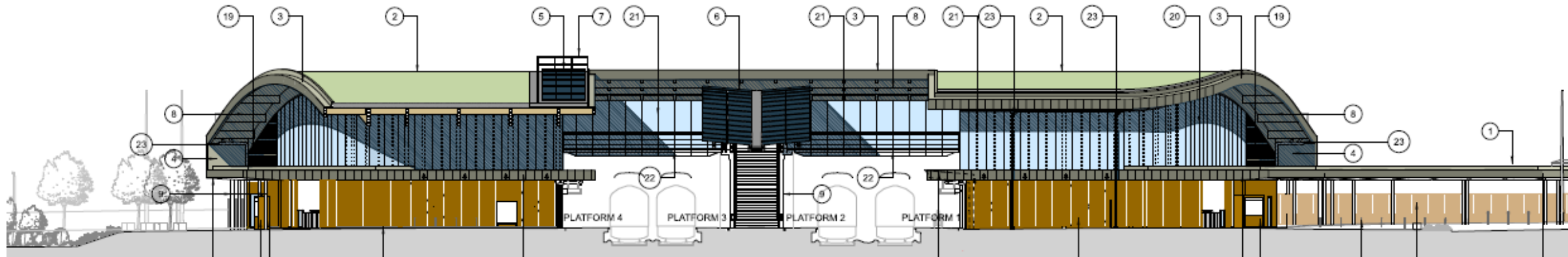
# Elevations

North elevation

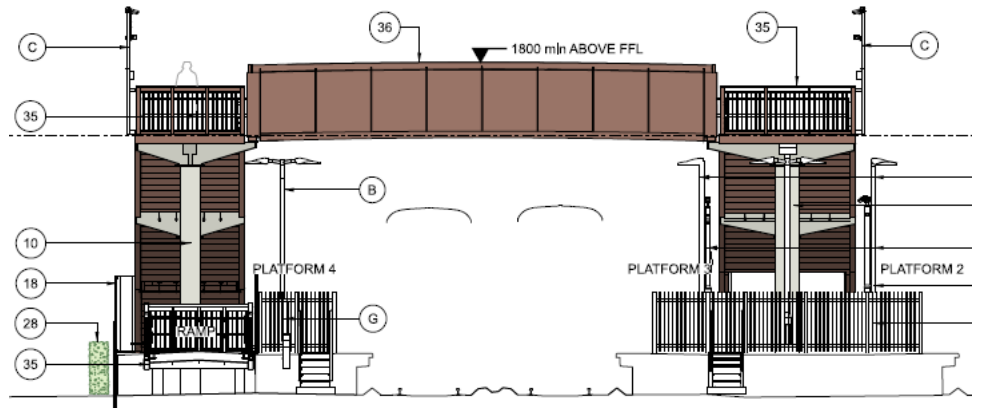
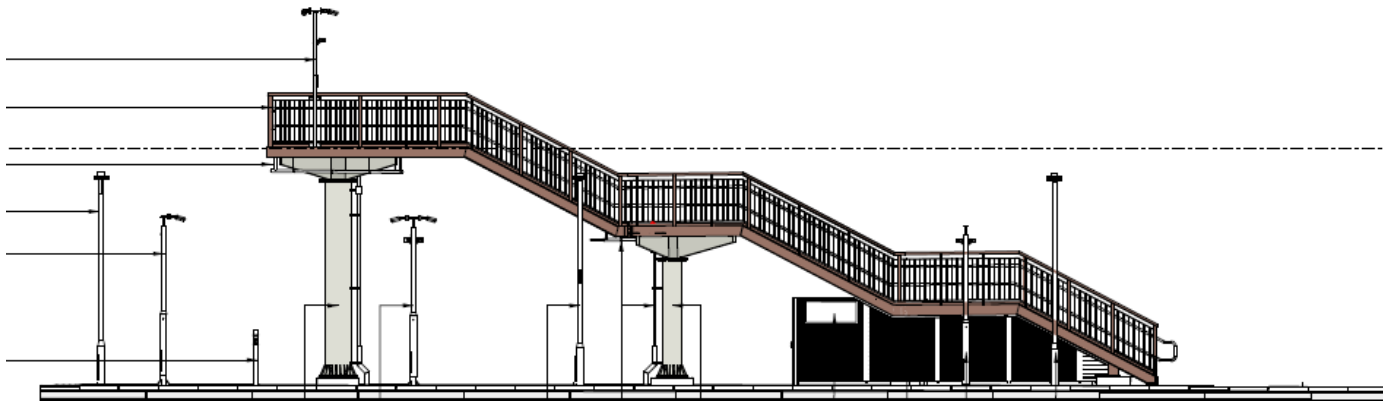
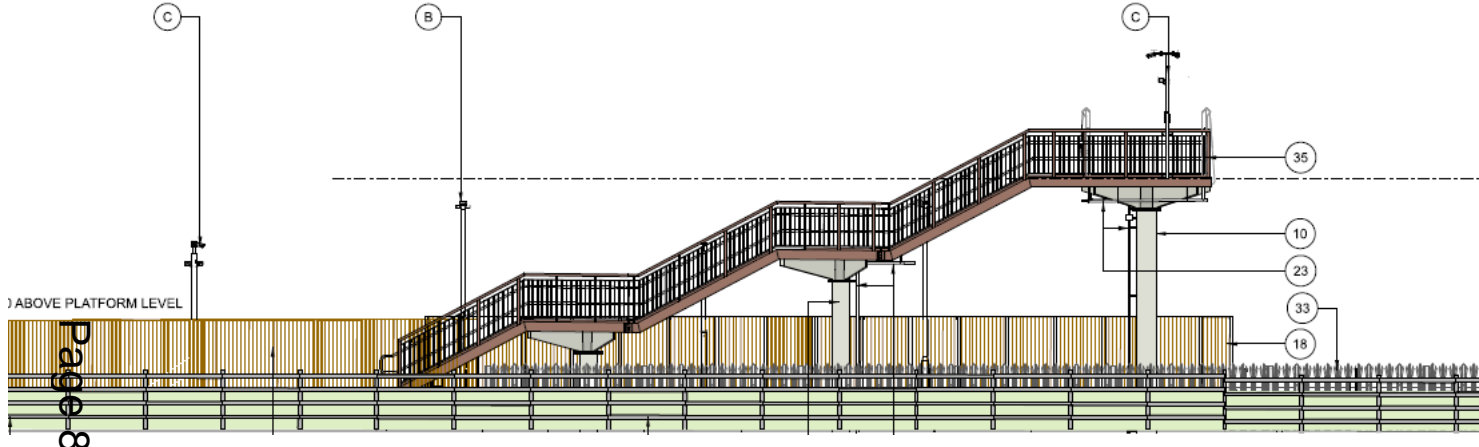


Page 7

South elevation

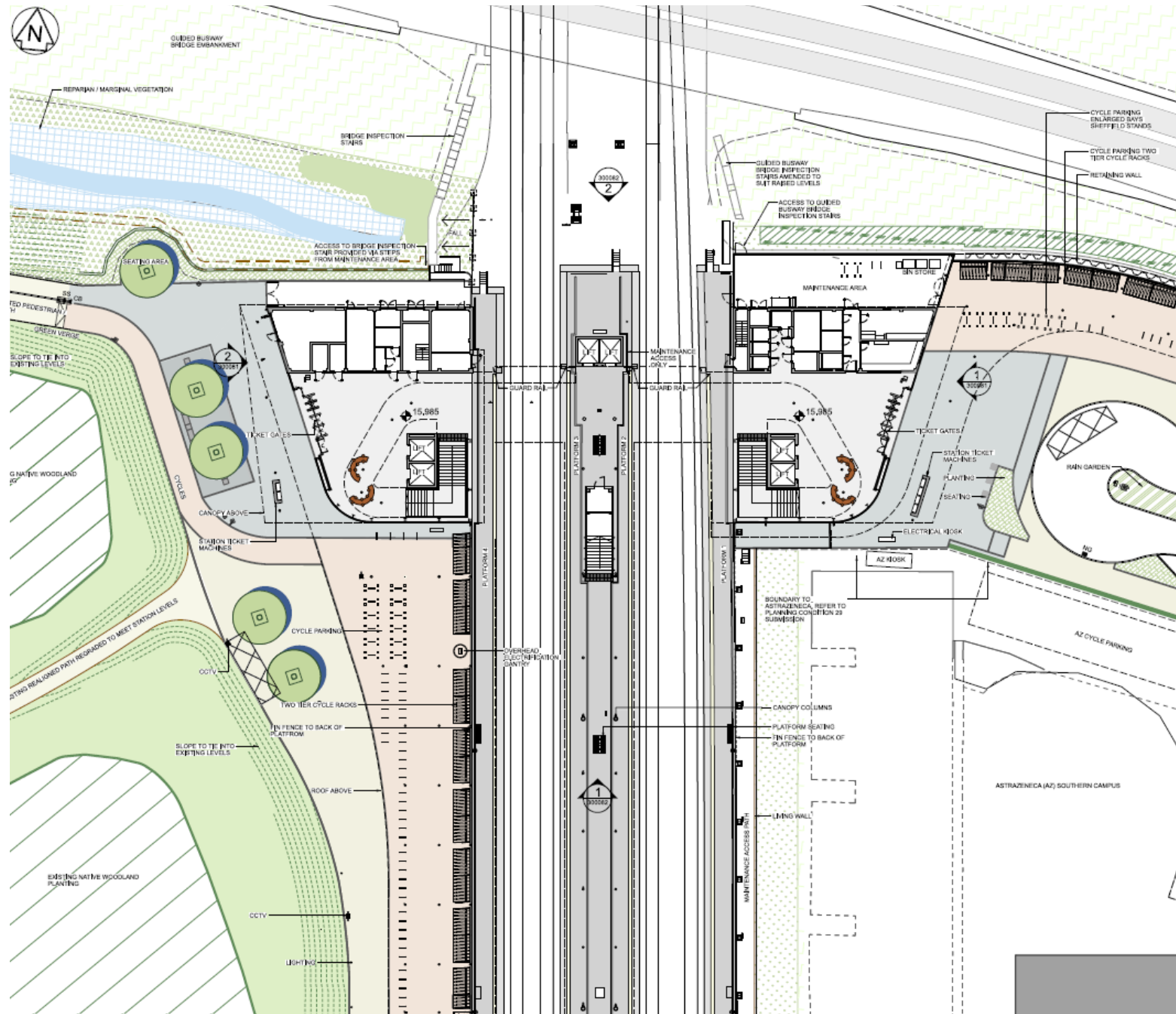


# SME bridge



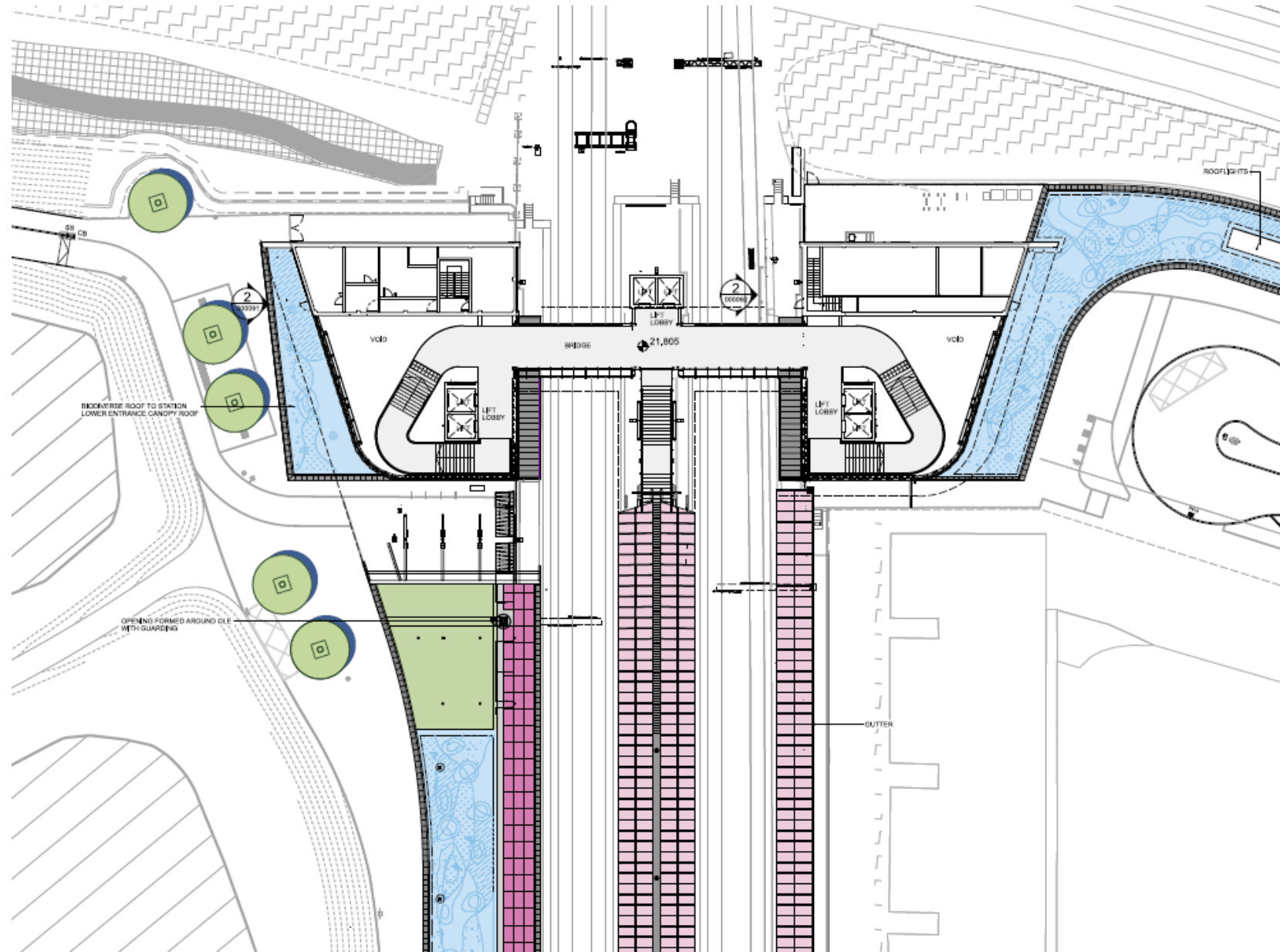


# Platform level plan



# Platform bridge level plan

Page 10



# Aerial view



# Hobson's Park view



# Biodiverse canopy in Hobson's Park



# CBC/eastern forecourt view



21/02957/COND22

**Joint Development Control Committee – 16 August 2023**

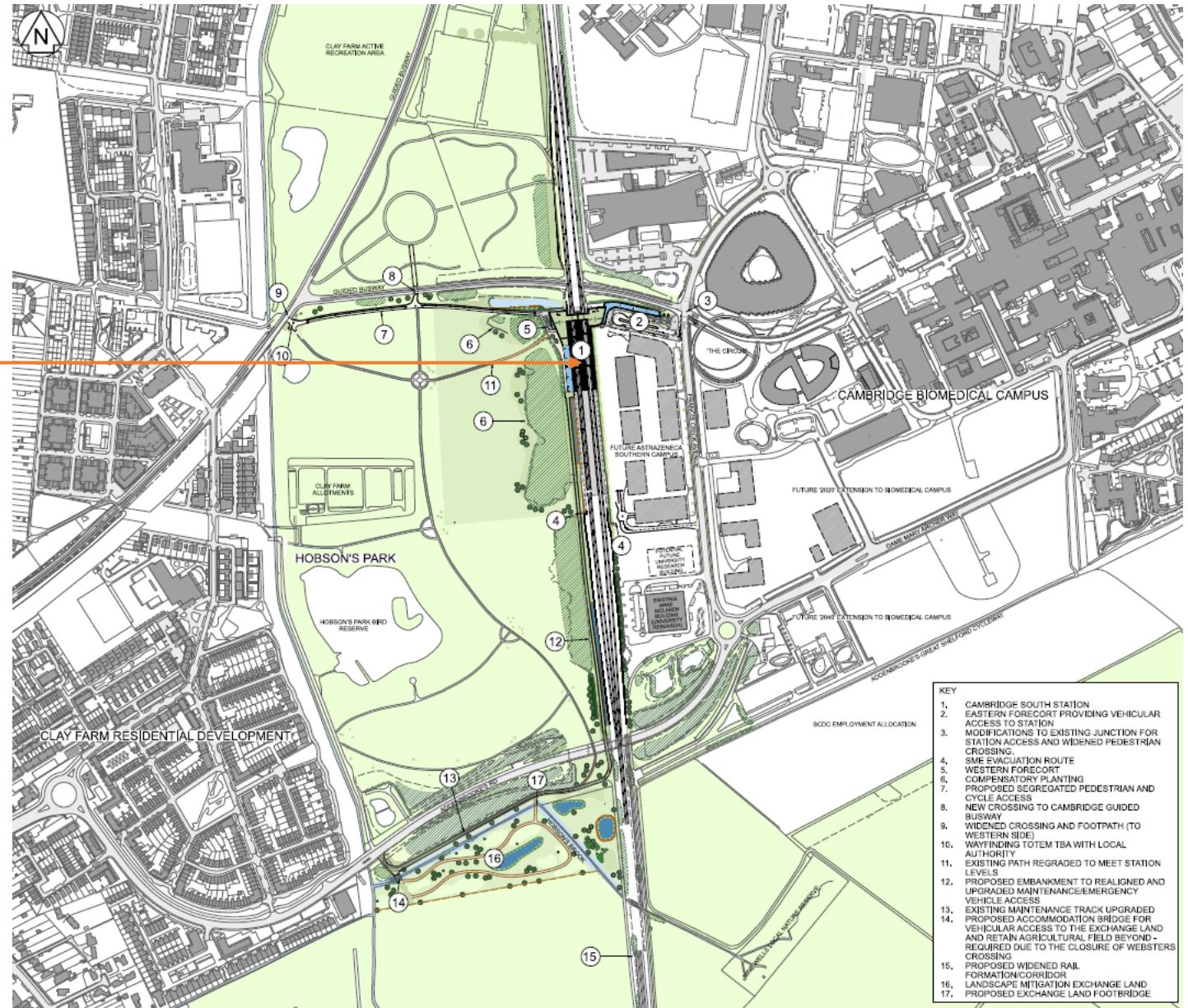
Mairead O’Sullivan, Principal Planner

Proposal: Submission of details required by condition 22 (Cycle Parking: Cambridge South Station) for phase 4 of the development of the deemed planning consent associated with the Network Rail (Cambridge South Infrastructure Enhancements) Order 2022 (Local Planning Authority Reference 21/02957/TWA)

# Location Plan

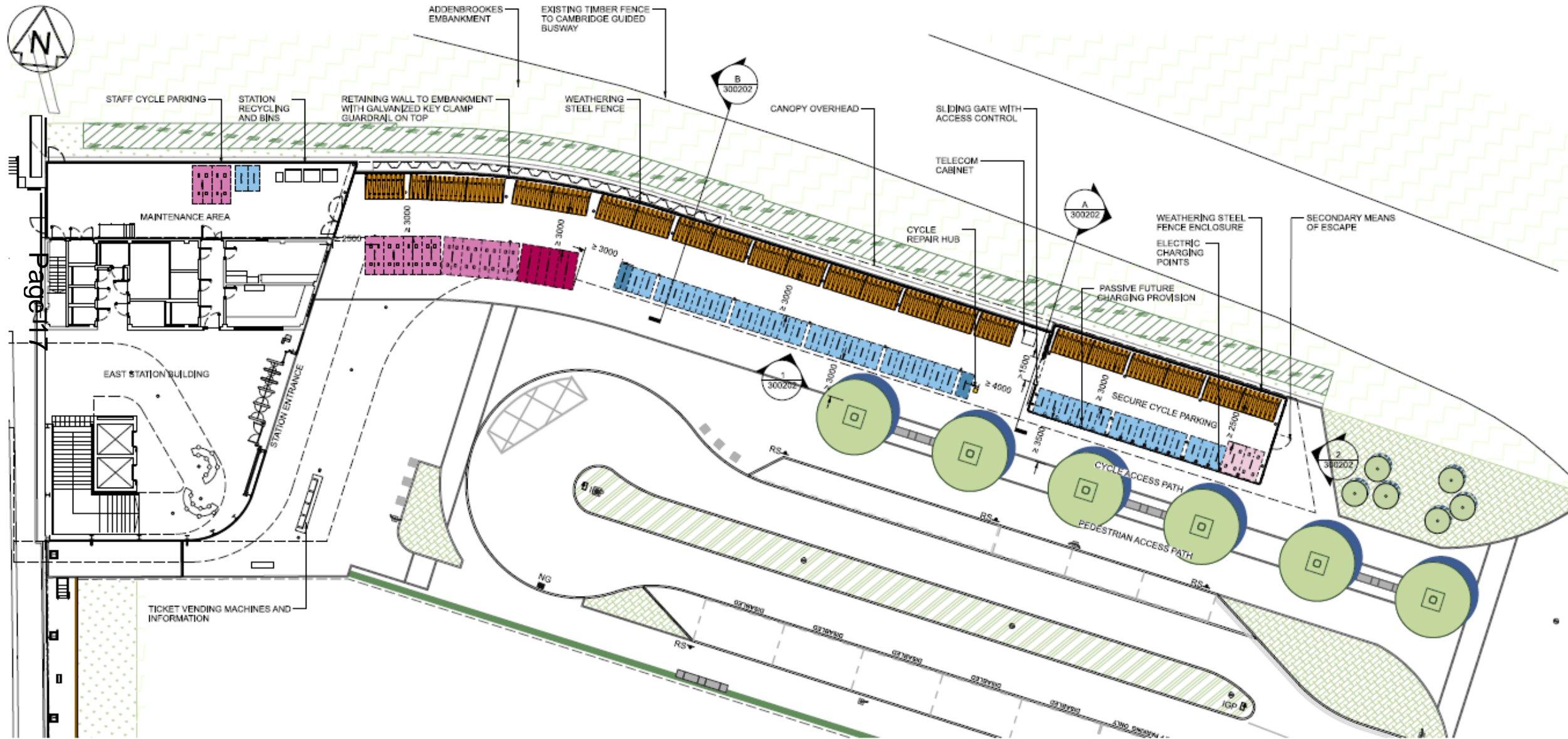
Station location

Page 16

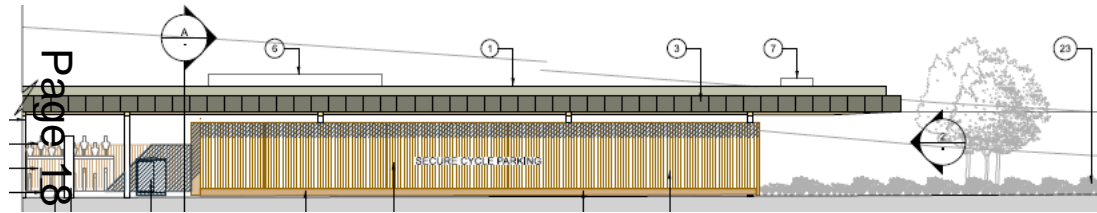
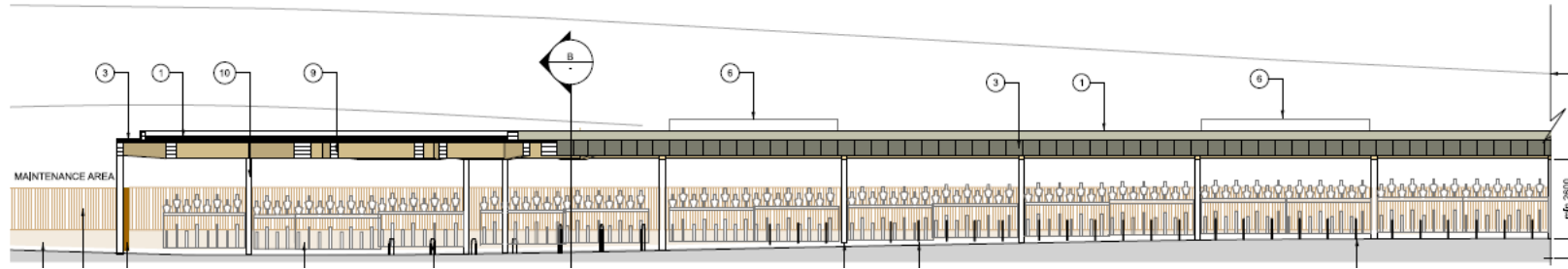




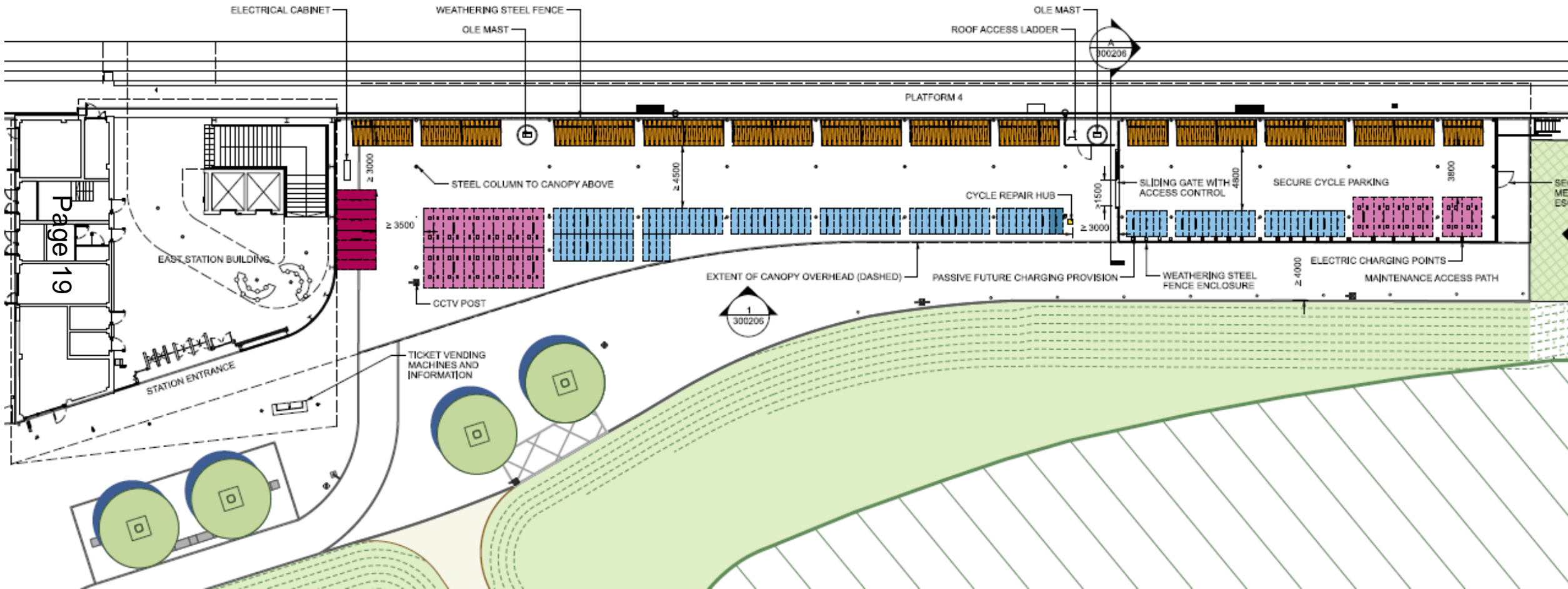
# Eastern cycle parking layout



# Eastern cycle parking elevations

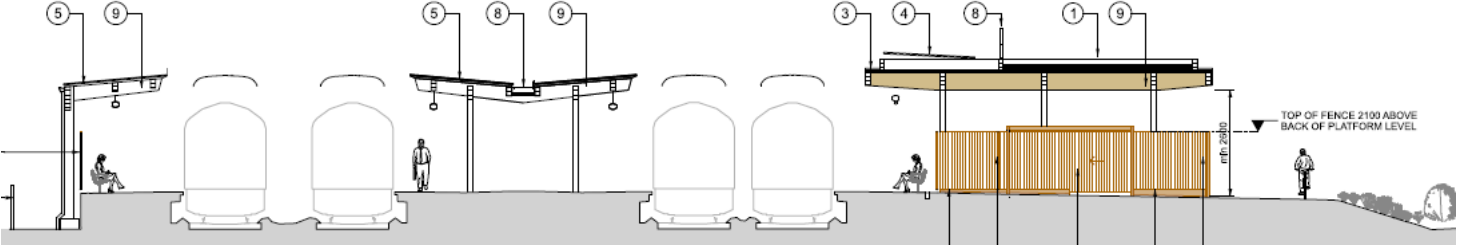
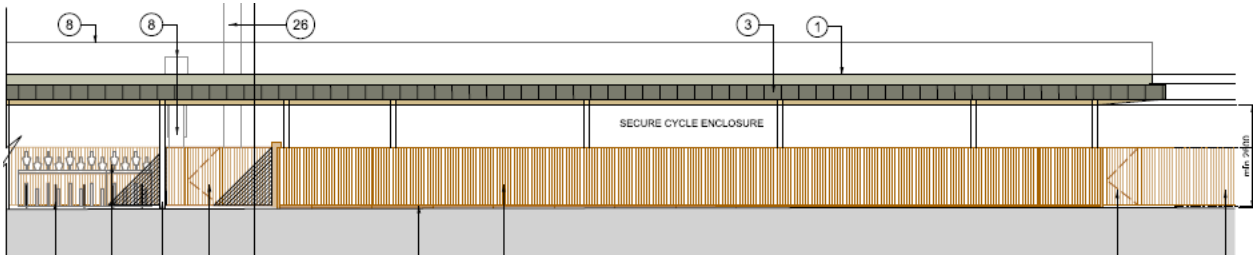
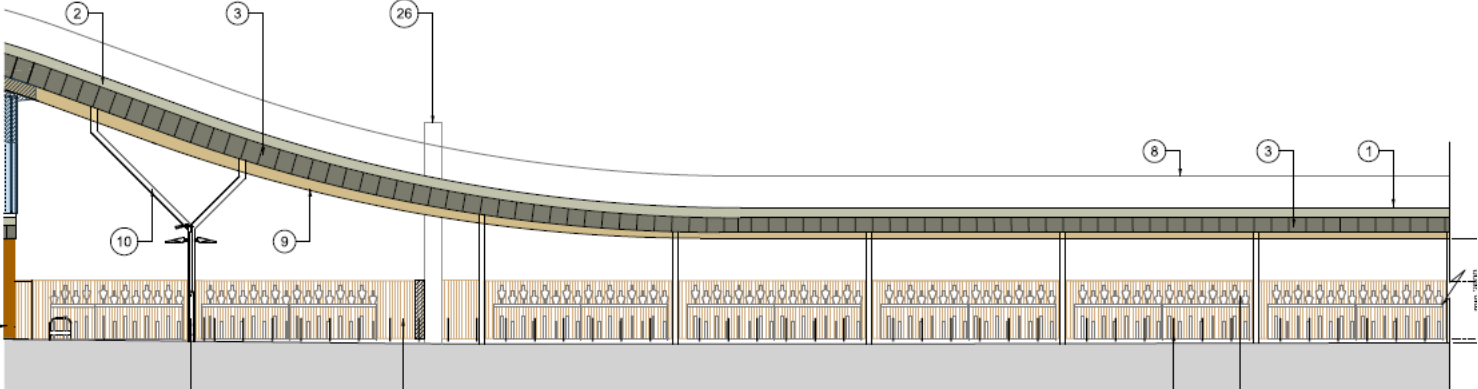


# Western cycle parking layout



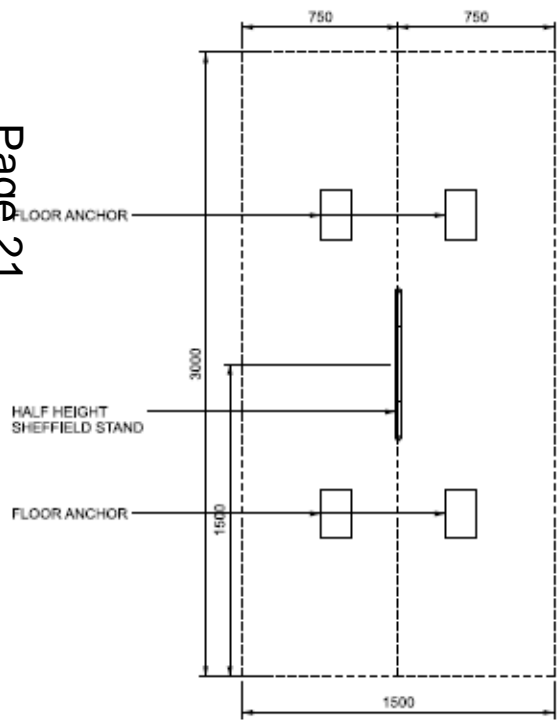
# Western cycle parking elevation

Page 20

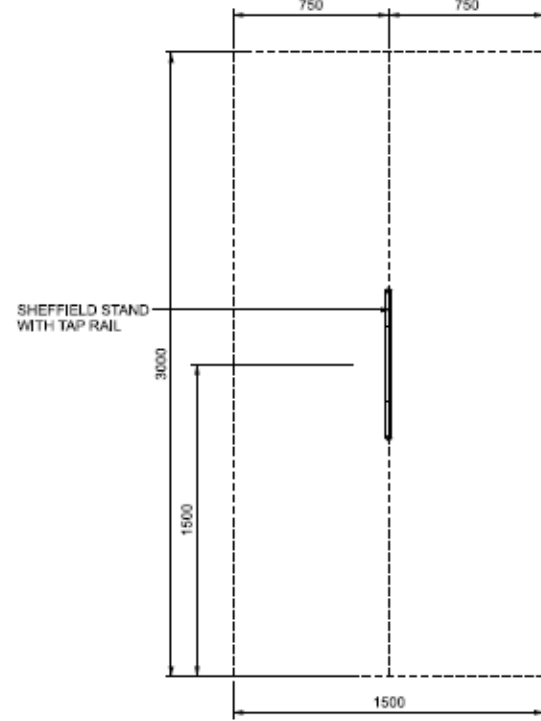


# Stand types

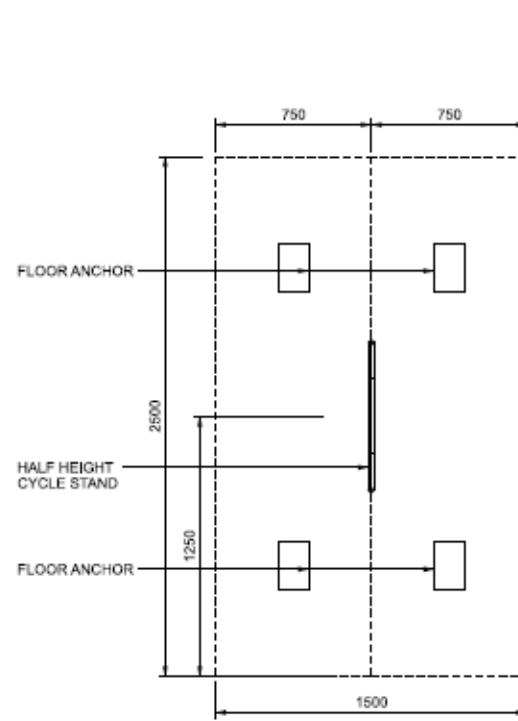
ENLARGED / INCLUSIVE BAY TYPE 1  
1/20



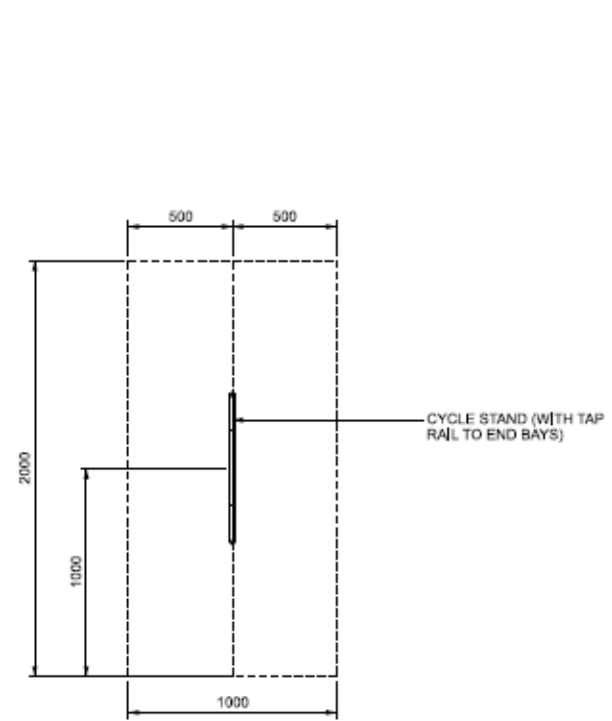
ENLARGED / INCLUSIVE BAY TYPE 2  
1/20



ENLARGED / INCLUSIVE BAY TYPE 3  
1/20



TYPICAL STANDARD BAY ARRANGEMENT  
1/20



# West and eastern canopy views

